

*16 Executive Cottages
on 75 Shorefront Acres*

=====

*Located Minutes from Rapid
Economic Growth*

=====

Fully Furnished

=====

All Inclusive Optional



Now Pre-Leasing



www.pynehamlet.com

Howard and Ruth Mills
info@pynehamlet.com
250.632.2907



Luxurious Coastal Cottage Living

A Balanced Lifestyle for Work, Life & Play



Since its inception in the 1950's the picturesque and purpose built town of Kitimat, fortuitously poised at the gateway of the Pacific Rim, has had an enviable reputation for offering its inhabitants the cultural and recreational life of a small city. With the many attractions of life in the North, and ready access to an untouched wilderness on both land and water - adventure is within easy reach for all. Plentiful, comfortable and modern housing now however is not...

Welcome Home

As Kitimat and the NW of British Columbia enter a new and prosperous era of multi-billion dollar energy projects, projects that will benefit the whole of Canada, growth is visible everywhere.

Pyne Hamlet Properties is planning to supply luxury hotel corporate accommodations to companies in order to satisfy their executive and managerial accommodation needs for the duration of their projects and for as long as they will need them- a pre-emptive approach to the shortage of quality housing in a market that is currently attracting more people to Kitimat than the town can accommodate. Earlier multi-billion dollar projects have consumed almost all of Kitimat's available housing, and much of what is left on the market is now older, smaller and of poor quality.

Pyne Hamlet Properties plans to relieve incoming corporations, their managers and executives of such concerns. Operating as a 70 bedroom hotel, Pyne Hamlet Properties is now seeking interest from those corporations that wish to secure brand new, attractive, serviced, shorefront housing with onsite dining, meeting and function rooms, and recreational possibilities for leisure and team building purposes, all on its own shorefront within the town of Kitimat, and just moments from the proposed projects. Incoming companies will be invited to take on, in their entirety, any number of three, four or five bedroomed cottages for the duration of their projects. Up to sixteen cottages will be constructed and interest in their occupation is now being sought. Companies planning later projects may now also reserve their cottages to follow the hamlet's first occupants.

Live. Work. Play.



Live. Work. Play.

About the Community

Highlights of Kitimat

With the cultural and entertainment options of a larger city, Kitimat's leisure industry is also undergoing growth. Shopping is available in the downtown core, indoor recreational facilities include a brand new swimming pool and two skating rinks, and the Kitimat Museum offers a glimpse into the community's exciting past and its many accomplished artists. Plentiful guided adventure tours in the pristine natural surroundings are available to hikers, fishermen and kayakers alike. Kitimat's exquisitely scenic 18 hole golf course with its curling rink and clubhouse offers exercise and bonhomie, and the dining options throughout the town permit evenings of enjoyment and relaxation with friends



Outdoor	Indoor	Attractions
Golf	Skating	Centennial Park
Downhill Skiing	Hockey	Coghlin Park
Cross Country Skiing	Parks	Heritage Park
Kayaking / Canoeing	Rafting	Hospital Beach
Fishing	Horseback Riding	Kitimaat Village
Skating	Aquatic Centre	Kitimat Museum
Hiking	Snowshoeing	Moore Creek Falls
Boating		The Giant Sitka Spruce

Location

Pacific Ocean



British Columbia



About the Village



Pyne Hamlet Properties will be a small village of brand new oak post and beam cottages, nestled together on its own private estate on the spectacular shoreline of Minette Bay, within the municipality, but quite out of sight - fully-appointed and luxurious green living, within easy reach of the proposed projects, from where busy executives and their managers can quietly and securely manage their teams.



CAR PORT
PUMP HOUSE
COTTAGE



Future Chapel

Minette Bay Ledge

PHASE II
Ole Jack Pyne Pub

With sixteen 3, 4, and 5 bedroomed cottages constructed on 75 acres of private seaside property, Pyne Hamlet will offer exclusive and unrivalled corporate accommodations anywhere in BC.

The construction, by internationally renowned oak frame builder 'Border Oak', which is based in the rural heartland of the United Kingdom, will be of bespoke designs, handmade by skilled craftsmen using heritage techniques dating back to the 13th century. Construction will adhere to the environmentally sound principles of sustainability and a low carbon footprint, and be sensitive to the features of the land within which it will sit.

With the first phase of construction set to begin in mid-2012 and an occupancy date of 2013, the sixteen cottages will range from 1,200 square feet to 2,000 square feet, depending on companies' desired configuration and the number of rooms. The luxury Pyne Hamlet will be fully-furnished and equipped with the latest in comforts and technology. Sheltered parking will be appointed for each cottage for ease of access and egress during the winter months.

About the Cottages

Pyne Hamlet's cottage Features

Exceptional, thoroughly-tested insulation. Cottages are virtually airtight with proper circulation and ventilation.

Natural, low-impact materials

Green oak-carbon store, low embodied energy, non-toxic

Lime renders

Passive solar design

Bio mass boilers

Geo thermal heat

Waste management scheme

Reclaimed/re-used/recycled materials

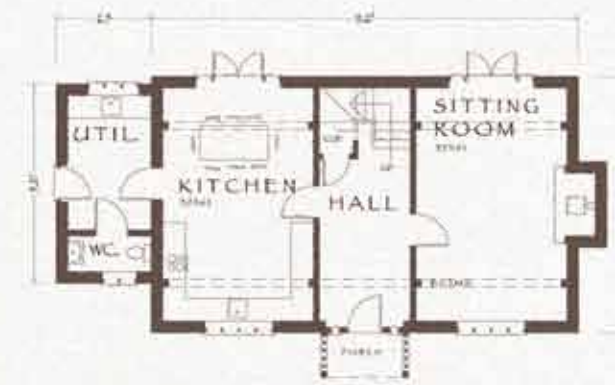
Grey water harvesting

Carbon neutral

Minimal use of concrete and cement



Border Oak's commitment to sustainable design means that each Pyne Hamlet Cottage will be a low-carbon building. Luxurious and beautifully appointed, modern and at the same time traditional, the cottages will be crafted with the latest in construction technology.



1ST FLOOR PLAN
3 BEDROOM



2ND FLOOR PLAN



1ST FLOOR PLAN
4 BEDROOM



2ND FLOOR PLAN



1ST FLOOR PLAN
5 BEDROOM



2ND FLOOR PLAN



*16 Executive Cottages
on 75 Shorefront Acres*

=====

*Located Minutes from Rapid
Economic Growth*

=====

Fully Furnished

=====

All Inclusive Optional



Now Pre-Leasing



www.pynehamlet.com

Howard and Ruth Mills
info@pynehamlet.com
250.632.2907



Luxurious Coastal Cottage Living

A Balanced Lifestyle for Work, Life & Play